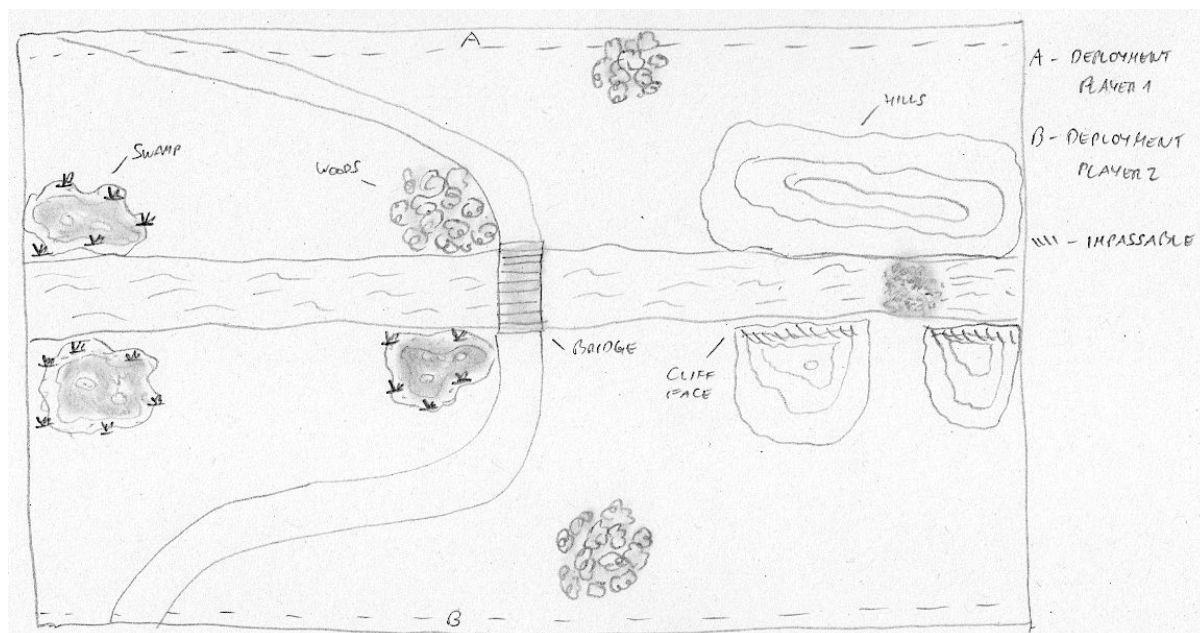


# Smooth Runs the Water Where the Brook is Deep

*A scenario for Wars of the Roses skirmishing using the Sharp Practice rules by TooFatLardies*

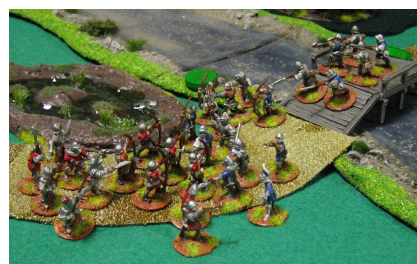
Scouts have discovered a decrepit bridge over a river that, after a couple of days hard rain, is in flood. Both Lancastrians and Yorkists want to secure the river crossing for their supply lines. To the east of the bridge, where the river is traversing craggy hills, there is a ford. Due to the high waters, however, it will be difficult to negotiate. The river itself, though looking calm, is deep and swift-flowing. Men trying to cross it will be in grave danger of drowning.



Apart from the bridge and the ford, the river is impassable.

Groups retreating or routing will, if their way is blocked by the river, try to wade or swim through it. For game purposes, this means they are immediately lost.

The ford as well as woods, hills and swamps count as heavy terrain.



The player who has at least two groups on the other side of the river by turn 10 will win the game.

## Forces

### *Yorkists*

Big Man Status IV

Big Man Status III

Big Man Status II

1 group of 6 men-at-arms (Q: good, AS: 4+)

2 groups of 6 billmen (Q: good, AS: 5+)

2 groups of 6 archers (Q: good, weedy coves, AS: 5+)

### *Lancastarians*

Big Man Status IV

Big Man Status III

Big Man Status II

1 group of 6 men-at-arms (Q: good, AS: 4+)

2 groups of 6 billmen (Q: good, AS: 5+)

2 groups of 6 archers (Q: good, weedy coves, AS: 5+)